

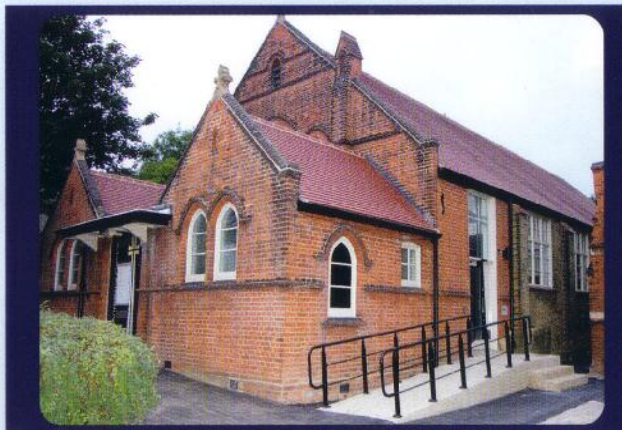
Storage

- The parish's annual bazaar will be held in *St Andrew's Centre*, together with regular quiz evenings, barn dances, coffee mornings and other events
- The Main Hall and Norah Linsey Room offer flexible accommodation for public and private meetings, presentations and consultation groups or even small counselling sessions



Kitchen detail

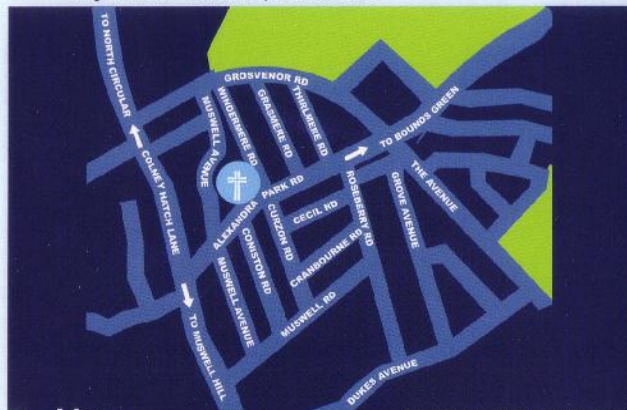
- The Main Hall is available to hire for rehearsals, drama and music classes and the like
- We hope to establish a regular luncheon club and to offer support and respite for carers
- *St Andrew's Centre* will be a great place to hire for children's parties



Access

Further information, including terms and conditions, hire charges and details of all facilities, is available from the address below.

Please note that smoking is not permitted anywhere on the premises.



Map

The Parish Office
 St Andrew's Church
 Alexandra Park Road
 London N10 2DD

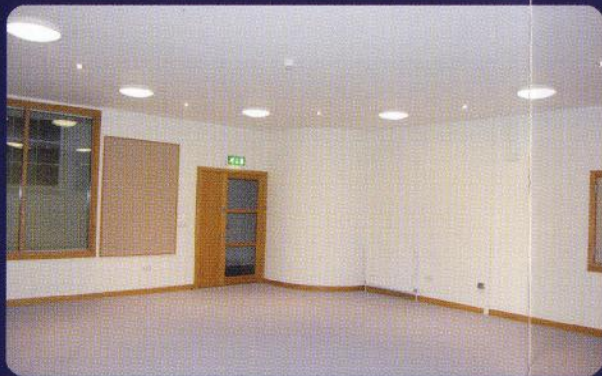
Tel: 020 8444 6898
 e-mail: office@alexandrapark.org

*A resource for the
 community*

St Andrew's Centre



Main Hall



Norah Linsey Room



St Andrew's Centre



Kitchen

St Andrew's Centre comprises two meeting spaces. The Main Hall is well lit, with a wooden floor and high ceiling, and is ideal for large groups and events, for productions and public meetings (15m x 10m). The Norah Linsey Room is smaller (8m x 7m) and carpeted, with comfortable seating, ideal for conferences and for smaller groups. It gives direct access to the well-equipped kitchen, and double doors open on to the Main Hall. These spaces can be used independently or together, with or without full access to the kitchen. Booking details are available on request.

Facilities such as a ramped entrance, an induction loop, up to date toilets (with special provision for the disabled), and a nappy changing unit are intended to make it easier for a wide range of people to use the site.

Some storage space is available for regular users.

St Andrew's Church Hall has been serving the community of Alexandra Park Since 1922.

Now, thanks to members of St Andrew's Church, the local community, the Big Lottery Fund, the City Bridge Trust and other generous supporters, the newly-refurbished St Andrew's Centre can offer much needed, up to date facilities in a strikingly attractive setting.



St Andrew's Centre